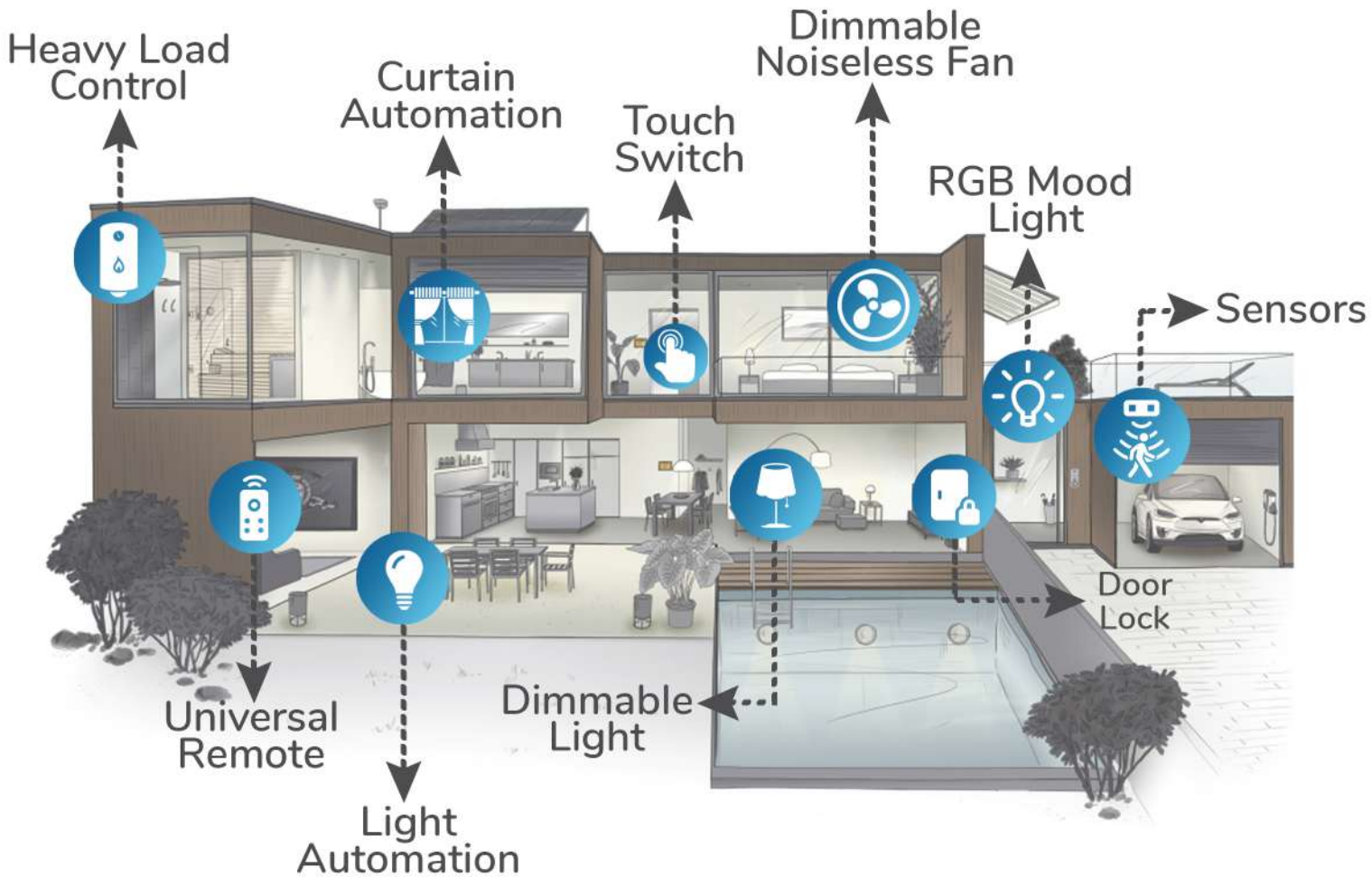


Retrofit Smart Home Solutions



Smart Node

Discover the Joy of Smart Living



Retrofit
 No Rewiring or Renovation needed in your existing system for SmartNode to work

Easy Installation
 Convert your Home into Smart Home in 30 minutes quick installation

Stand-Alone
 No Hub needed, connects directly with WiFi router

Voice Controlled
 Can be accessible hands-free via Amazon Alexa and Google Home

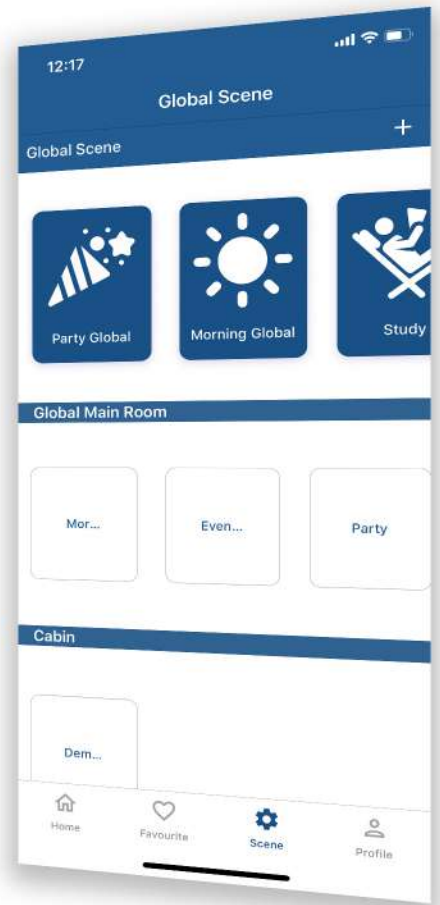
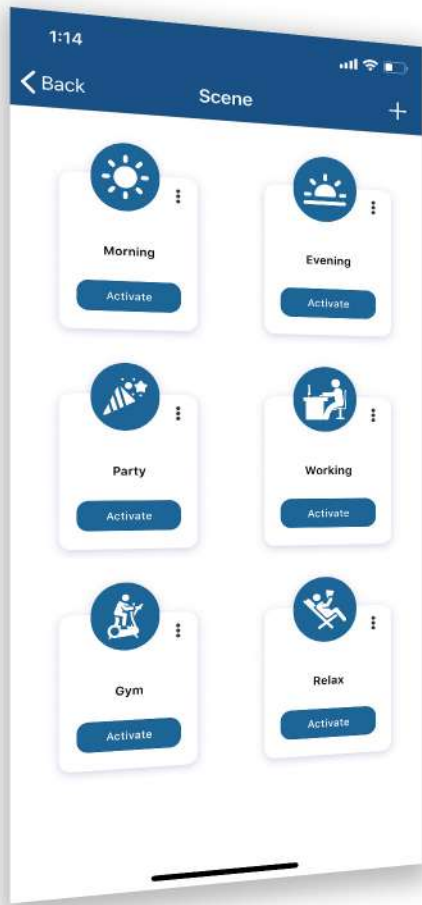
Mobile Application
 Can be controlled via SmartNode application at any time from anywhere in the world

Replacement Warranty
 1 year on-site replacement warranty by the company

User Friendly
 People of all ages can access it flawlessly and personalize it as per their choice

Design
 All SmartNode products are designed keeping in mind the Indian environment and culture

Mobile Application



SmartNode Application makes your life Smart & Easy. You can monitor, control, schedule & lock any appliances through mobile application from any remote location.

Scene

Create romantic atmosphere or party mood on a single click

Guest Lock

Limit the access of appliances to the guests visiting your place

Child Lock

Lock the physical access to your appliances like A.C., TV...

Schedule

Automatically control your appliances and have a tension free schedule for it

Live Notification

Get instant notification when status of your appliance changes

Geo-Fencing

Automatic Scenes can be executed as per our entering or exiting a specific location range

Voice Enabled Devices

"Alexa, set the bedroom light to red."

"Alexa set the power to 40% on Fan"

"Hey Google, turn off Main Light."

"Alexa, Good Morning"

"Alexa, party mode On."



Just ask Alexa or Google Home to get your work done - whether it's switching On/Off any Light, Fan or A.C., which are connected with SmartNode hardware.

Lighting Automation



Retrofit **8 Node**

Model No.: 8.1/8.0

- ▶ Smartens Eight Appliances
- ▶ Operates on Wi-Fi 2.4 GHz (No need of Hub/Controller)
- ▶ Compatible with SmartNode Touch Switches as well as Traditional Switches
- ▶ Quick & Easy Installation
- ▶ Mounting: Inside Switch-Boards
- ▶ Power mode feature available: Automatic turn On/Off loads after power-cut
- ▶ Operational range: 100V-240V
- ▶ Loads:
 - 1 - Noiseless Fan (Humming free) 5 speed control or a Regular Load
 - 1 - Heavy Load upto 3500W(A.C., Geyser....)
 - 3 - Regular Load upto 2500W(Plug, Light....)
 - 3 - Dimmable Load upto 300W(Fan, Dimmable Light...)

Lighting Automation



Retrofit **4 Node**

Model No.: 4.1/4.0

- ▶ Smartens Four Appliances
- ▶ Operates on Wi-Fi 2.4 GHz (No need of Hub/Controller)
- ▶ Compatible with SmartNode Touch Switches as well as Traditional Switches
- ▶ Quick & Easy Installation
- ▶ Mounting: Inside Switch-Boards
- ▶ Power mode feature available: Automatic turn On/Off loads after power-cut
- ▶ Operational range: 100V-240V
- ▶ Loads: 1 - Noiseless Fan (Humming free) 5 speed control or a Regular Load
 - 1 - Heavy Load upto 3500W(A.C., Geyser....)
 - 1 - Regular Load upto 2500W(Plug, Light....)
 - 1 - Dimmable Load upto 300W(Fan, Dimmable Light...)

Lighting Automation



Retrofit **2 Node**

Model No.: 2NL/2HL

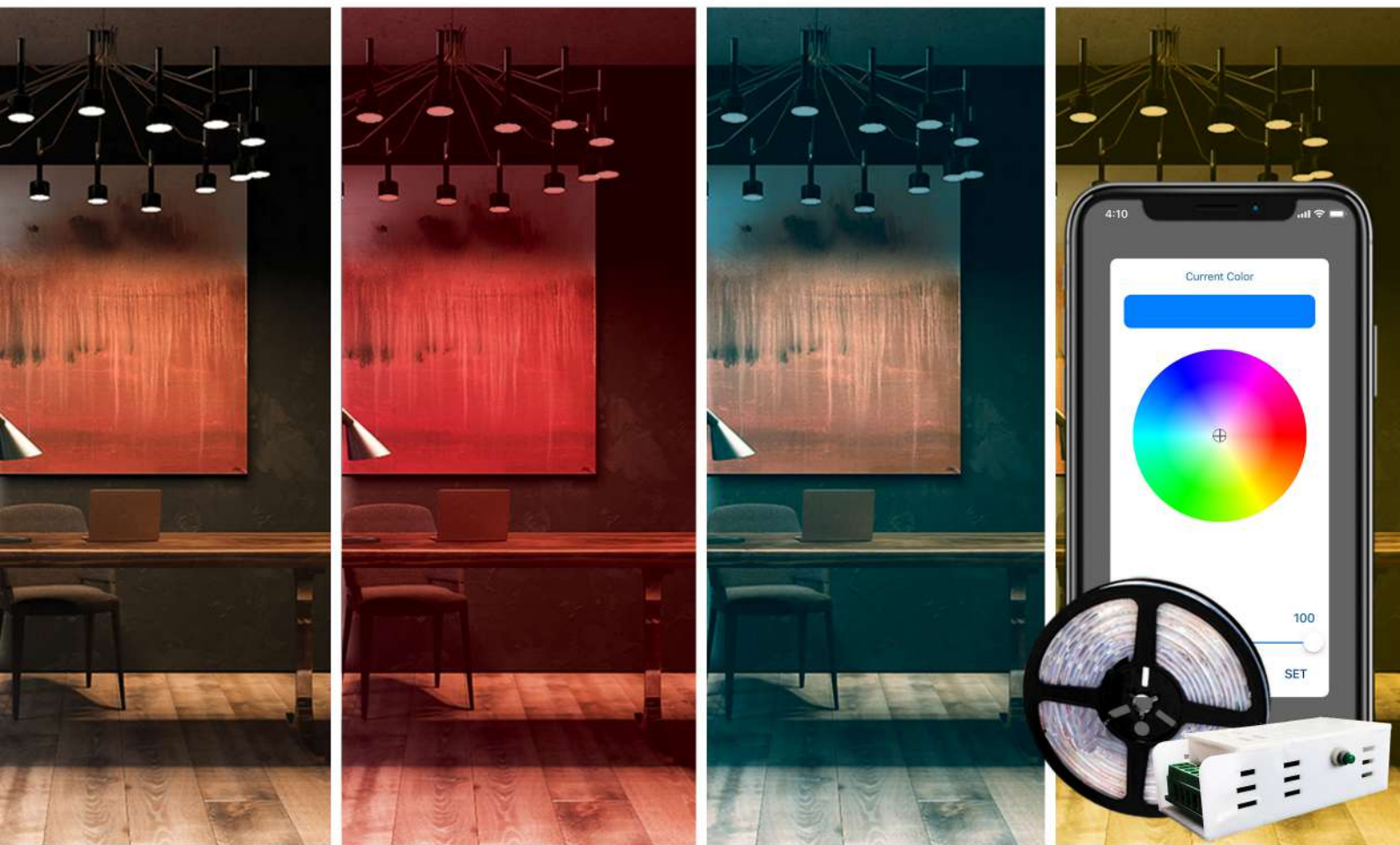
- ▶ Smartens Two Appliances
- ▶ Operates on Wi-Fi 2.4 GHz (No need of Hub/Controller)
- ▶ Compatible with SmartNode Touch Switches as well as Traditional Switches
- ▶ Quick & Easy Installation
- ▶ Mounting: Inside Switch-Boards
- ▶ Power mode feature available: Automatic turn On/Off loads after power-cut
- ▶ Operational range: 100V-240V
- ▶ Loads: 2 - Regular Load upto 2500W(Plug, Light....) or Heavy Load upto 3500W(A.C., Geyser...)



Retrofit Universal Remote

Model No.: I.1

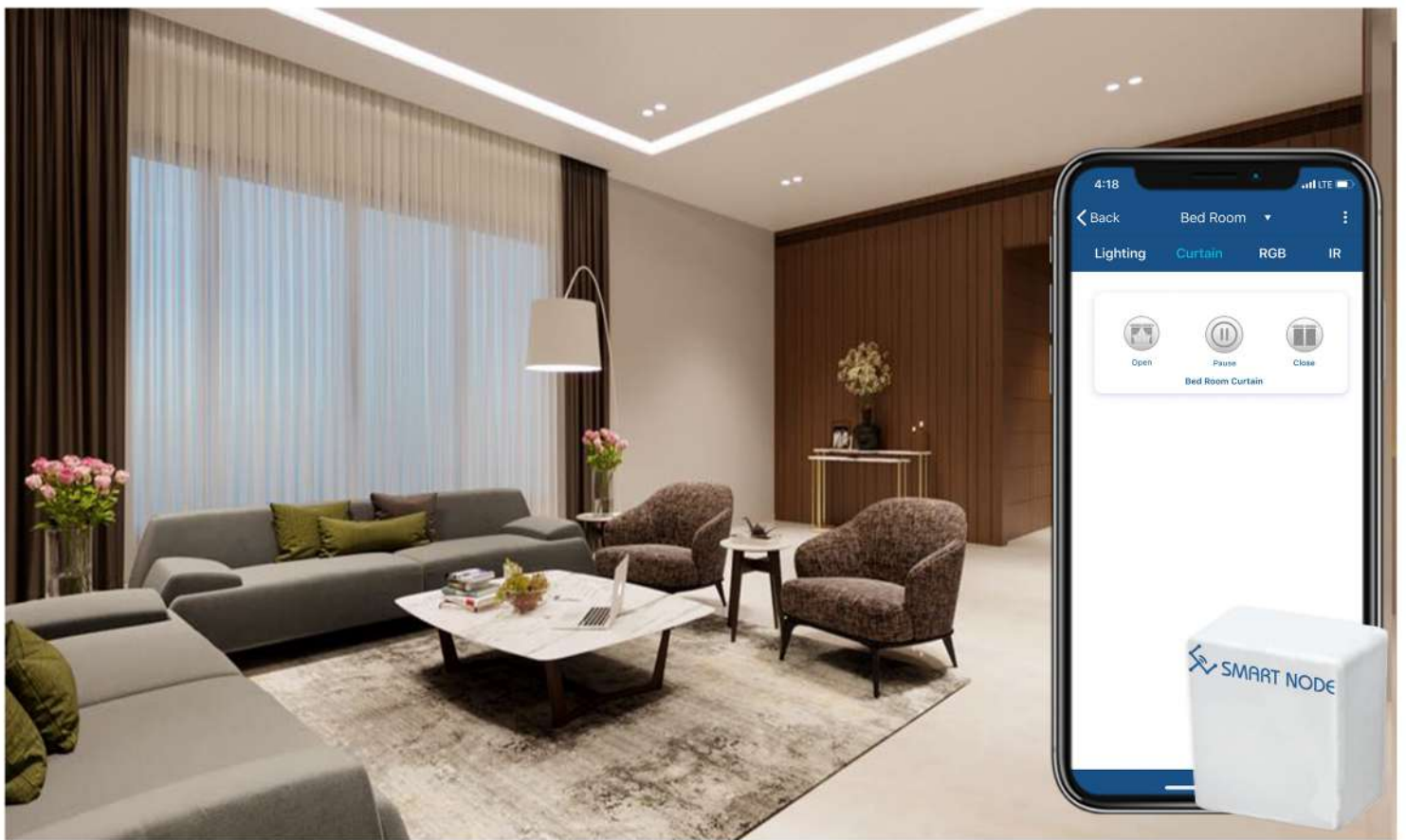
- ▶ 360° IR transmission
- ▶ Control AC, TV, Set-Top box, Blu-Ray/DVD and many more
- ▶ IR Blaster can be operated by :
 - ▶ SmartNode Application
 - ▶ Voice enabled device like Alexa
- ▶ Operates on Wi-Fi 2.4 GHz
- ▶ Works in synchronization with other SmartNode products
- ▶ Create schedule to set AC temperature, to turn on sports channel during match time and many more
- ▶ Infrared Frequency : 20kHz ~ 60kHz
- ▶ Range : 8m (line of sight)
- ▶ Fitting: Table-Top and Ceiling-Mount
- ▶ Working Temperature : 0~55°C
- ▶ Input Parameter : 5V DC, $\geq 1A$



Retrofit RGB Mood Light Controller

Model No.: R.1

- ▶ 16 million color options can be selected from SmartNode application as well as Voice enabled devices like Alexa
- ▶ Adjustable color temperature with dimmable light
- ▶ Operates on Wi-Fi 2.4 GHz (No need of Hub/Controller)
- ▶ Works in synchronization with other SmartNode products
- ▶ Schedule your favourite pattern/color for all your moods/party
- ▶ Quick & Easy Installation
- ▶ You can set your room's light according to your mood
- ▶ Operational range: 100V-240V



Retrofit Curtain Controller

Model No.: 8.1/8.0

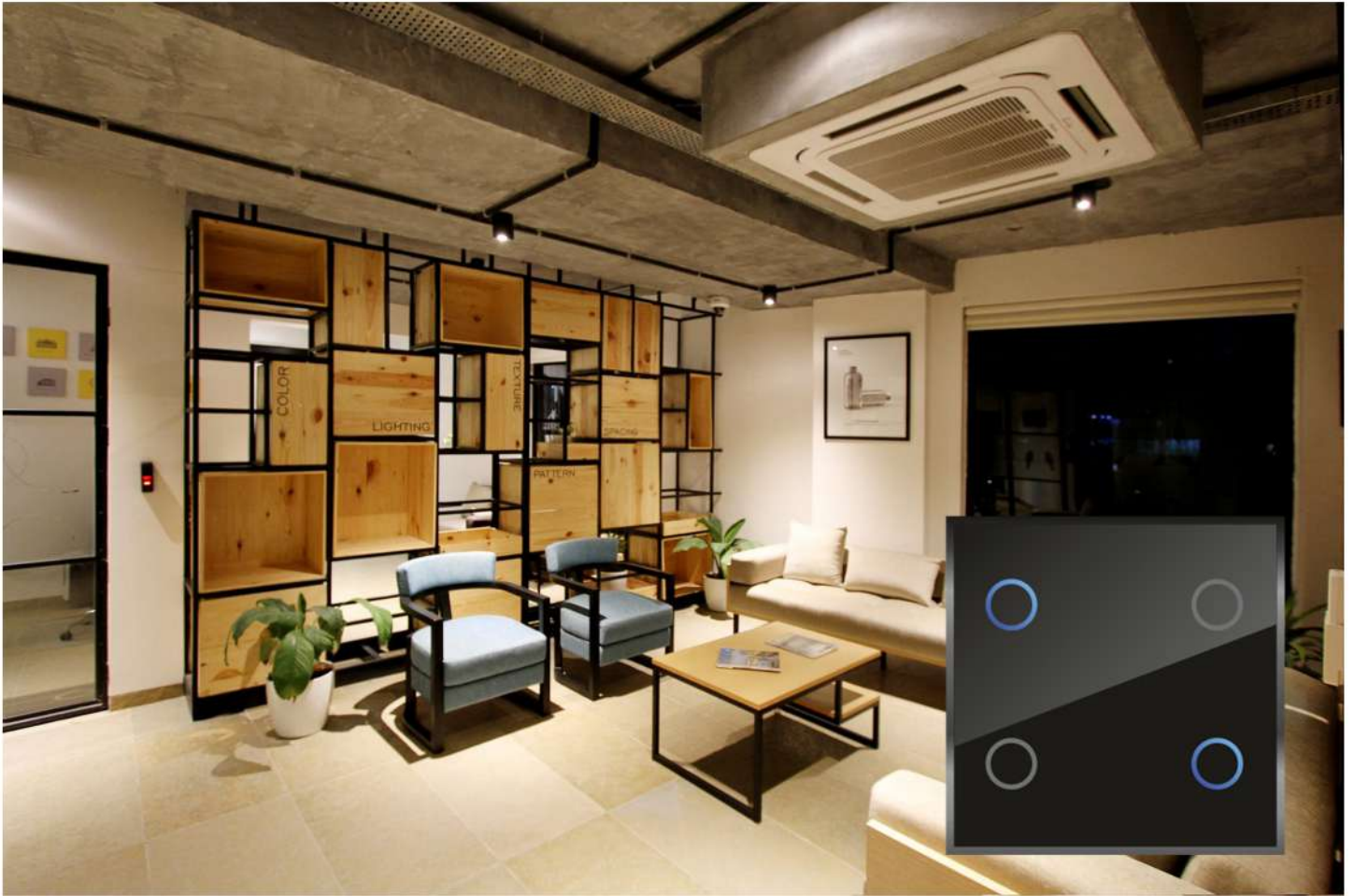
- ▶ Smartens any type of motorized curtains : Horizontal or Vertical
- ▶ Compatible with almost all types of Roman shades, Projector screens, Venetian blinds and many more
- ▶ Curtains can be operated by:
 - ▶ SmartNode Touch Switches
 - ▶ SmartNode Application
 - ▶ Voice enabled devices like Alexa
- ▶ Operates on Wi-Fi 2.4 GHz (No need of Hub/Controller)
- ▶ Curtains can still be moved by Hand
- ▶ Works in synchronization with other SmartNode products
- ▶ Schedules can be set to open or close the curtains automatically at a particular time
- ▶ Quick & Easy Installation
- ▶ Operational range: 100V-240V



Retrofit Door Lock Controller

Model No.: L.1

- ▶ Can be used to control EM Lock, Digital Lock, Curtain/Gate
- ▶ Automatic Door Close as per user time setting
- ▶ Locks can be control by:
 - >SmartNode Application
 - >Voice enabled device like Alexa & Goggle Home
- ▶ Operates on Wi-Fi 2.4 Ghz (No need of Hub/Controller)
- ▶ Works in synchronization with other SmartNode products
- ▶ Schedules can be set to open or close the door lock automatically at a particular time
- ▶ Quick & Easy Installation
- ▶ Operational range: 100V-240V



Retrofit Scene Controller

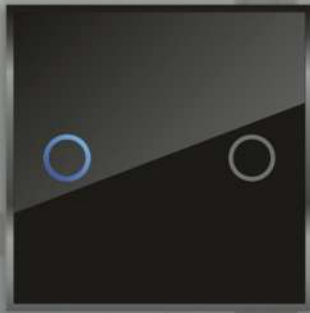
Model No.: S.4/S.8

- ▶ Scene Controller with 4 and 8 scenes controlling capability available
- ▶ The scenes can also be operated with a remote
- ▶ The scenes can be set with the help of Smart Node mobile application
- ▶ Not a single load wire needed to be connected to the scene controller
- ▶ A working internet is compulsory for a scene controller to execute scenes
- ▶ Live reflection on Touch Switch whether a scene gets executed or not
- ▶ Operates on Wi-Fi 2.4 Ghz (No need of Hub/Controller)
- ▶ Quick & Easy setup
- ▶ Operational range: 100V-240V

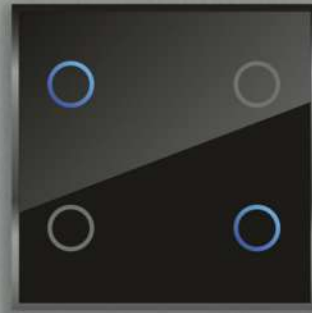


Retrofit Touch Interface

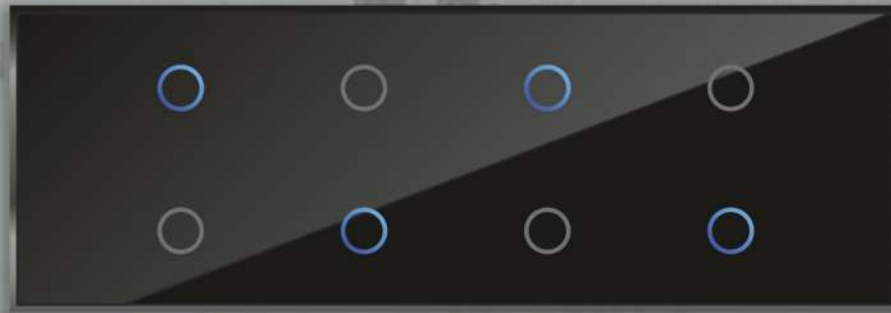
- ▶ SmartNode Touch Switches has an aesthetic value as it gives an elegant look to the interior of any room
- ▶ Fully customizable as per the user requirement (Modular in Size)
- ▶ Electrical accessories like bell switch, LAN cable socket, telephone socket, plugs and other can be added along with SmartNode Touch Switches in a Norisys Switchboard
- ▶ Compatible electrical accessories : Norisys
- ▶ SmartNode Touch Switches can be operated by remote, SmartNode application as well as voice enabled devices like Alexa & Google Home
- ▶ Even operatable with wet hands (Shockproof & water-resistant))
- ▶ Scenes can be operated using a remote
- ▶ Multiple dimming on a single Touch Switch Board possible
- ▶ SmartNode Touch Switches can be recognized even in night
- ▶ Quick Response Time
- ▶ Service Life: 1 Lakh Touch Operations



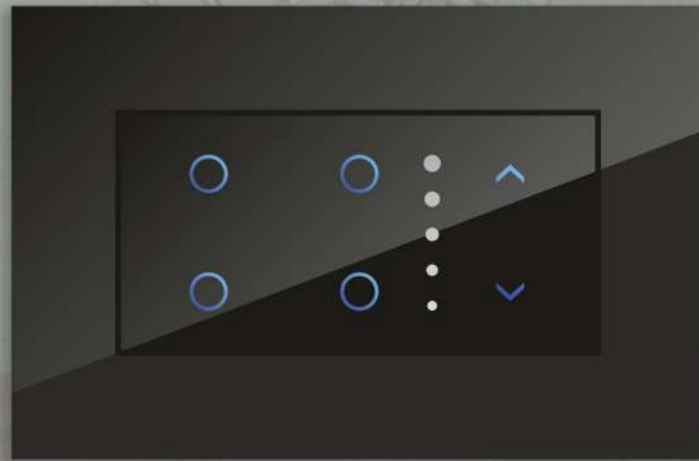
TI.2S



TI.4S



TI.8S



TI.4S1R



TI.4S1R

Product Range: TI.2S, TI.4S, TI.4S1R, TI.8S, TI.8S1R



: Get in Touch :

info@smartnode.in | www.smartnode.in